

Deric Wyatt, P.E.
District Engineer



Sheridan Rotary Club
Tuesday, September 20, 2016

The seal of the Arkansas State Highway and Transportation Department is a circular emblem. It features a central figure, likely a person or a symbol, surrounded by a ring of text. The outermost ring contains the words "ARKANSAS STATE HIGHWAY" at the top and "DEPARTMENT OF TRANSPORTATION" at the bottom. The inner ring contains the words "ARANSAS" at the top and "DEPARTMENT OF TRANSPORTATION" at the bottom. The seal is rendered in a light, faded style against a blue background.

Commissioner Robert Moore

Funding



Progress

Fixing America's Surface Transportation (FAST) Act

- Authorizes 5 Years of Funding
 - Federal Fiscal Years (FFYs) 2016-2020
- \$225.2 Billion for Highway Investment
- \$250 Million Increase for Arkansas over 5 Years
 - \$250 Million Increase from FFY 2015





Governor's Working Group on Highway Funding





2016 Special Session





Act 1 - Arkansas Highway Improvement Plan of 2016

	FY17	FY18	FY19	FY20	FY21
	(x \$1 M)				
2016 Special Session					
Long Term Reserve Fund (formerly named Arkansas Rainy Day Fund)	40.0				
Securities Reserve Fund	1.5	20.0	20.0	20.0	20.0
Redirect the \$4 Million of the Diesel Tax that goes to General Revenue to Highways (70/30 split)		2.7	2.7	2.7	2.7
Eliminate the State Central Services Deduction from 1/2 Cent Sales Tax (70/30 split)	5.4	5.4	5.4	5.4	5.4
Sub-Totals 2016 Special Session	46.9	28.1	28.1	28.1	28.1
Potential in Future Years					
Allocate up to 25% of Future GIF to Highways (Estimate Based on 10 Year Average)		48.0	48.0	48.0	48.0
Totals 2016 Special Session and Potential in Future Years	46.9	76.1	76.1	76.1	76.1



Summary of Needs

<u>NEEDS CATEGORY</u>	<u>COST</u> <u>(x \$1 M)</u>
SYSTEM PRESERVATION	
Pavement	3,438
Bridges	1,238
CAPACITY	3,236
SAFETY	787
MAINTENANCE	
Equipment	202
Facilities	70
ITS	30
TOTAL	9,001



Summary of Needs vs Revenue

	AMOUNT (x \$1 M)
ESTIMATED REVENUE⁽¹⁾ Federal-aid + State	4,415
TOTAL NEEDS⁽²⁾ Pavement, Bridges, Capacity, Safety, Equipment, Facilities, ITS	9,001
SHORTFALL	(4,586)

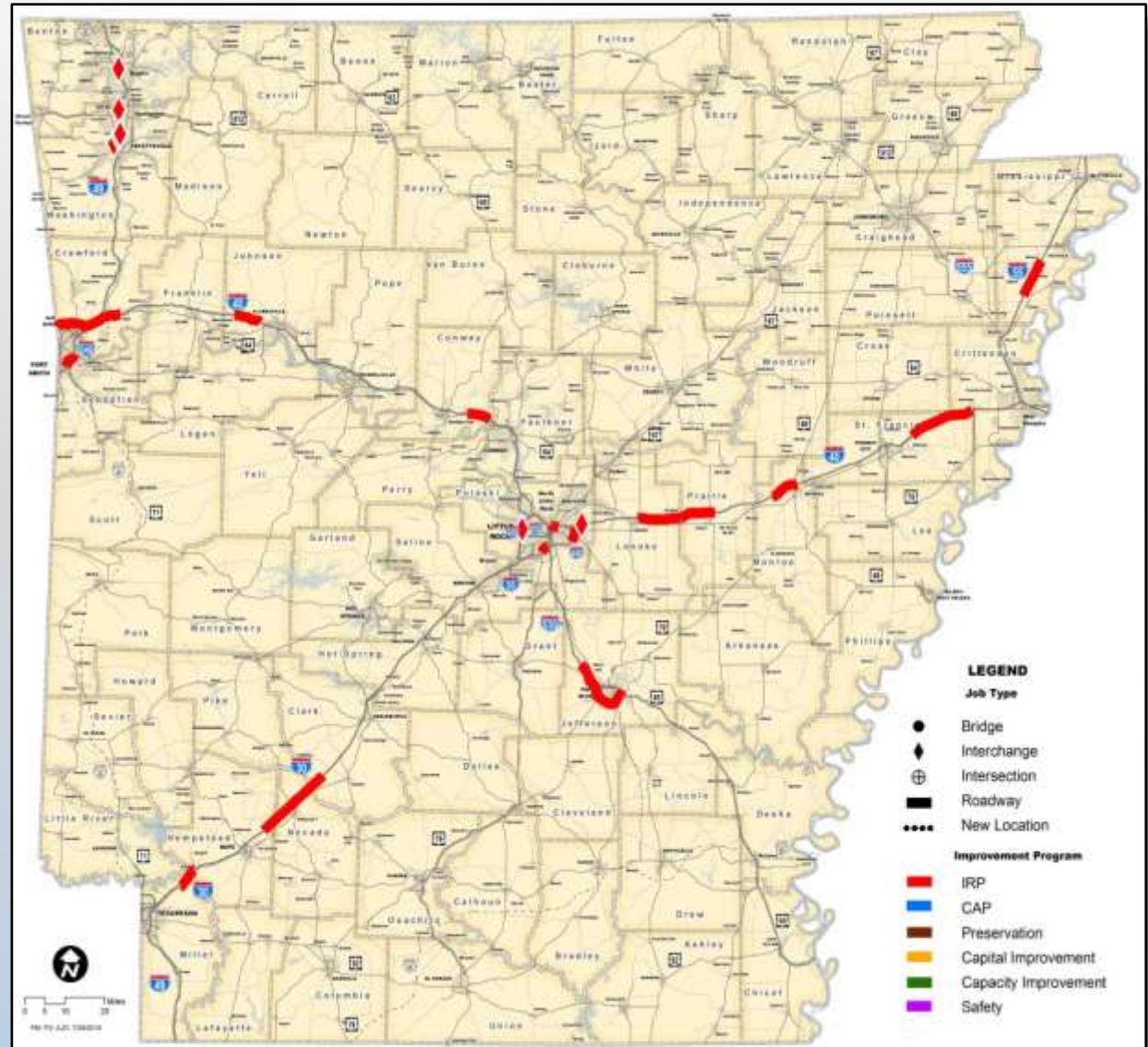
(1) Revenue Not Currently Dedicated to Routine Maintenance, Administration and Operations

(2) Does Not Include Economic Development Connectors or Congressionally-Designated High Priority Corridors



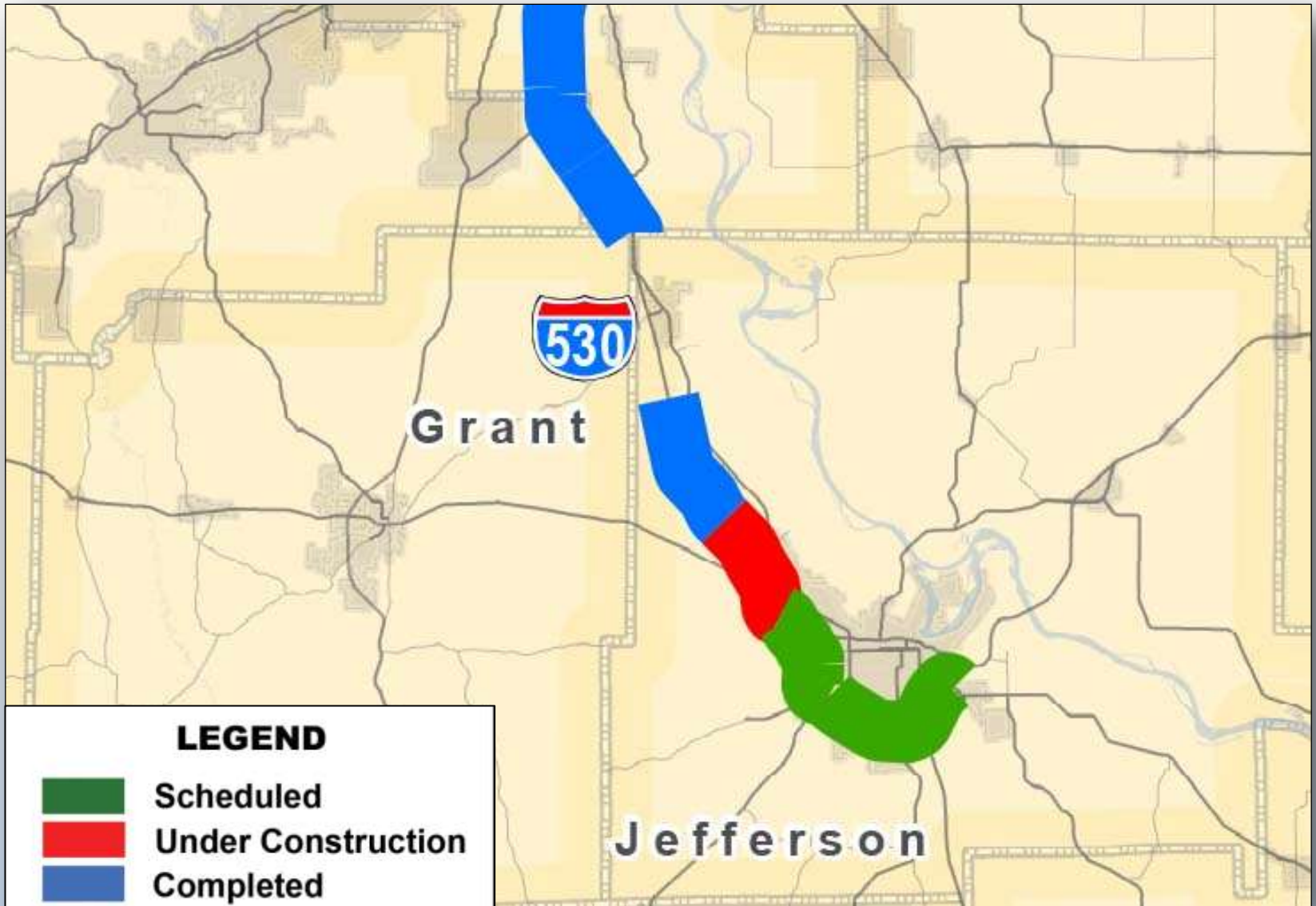
Interstate Rehabilitation Program

- Voter Approved
- \$1.2 Billion Program
- Pavement Condition
- Average Daily Traffic
- Safety





Interstate Rehabilitation Program – I-530

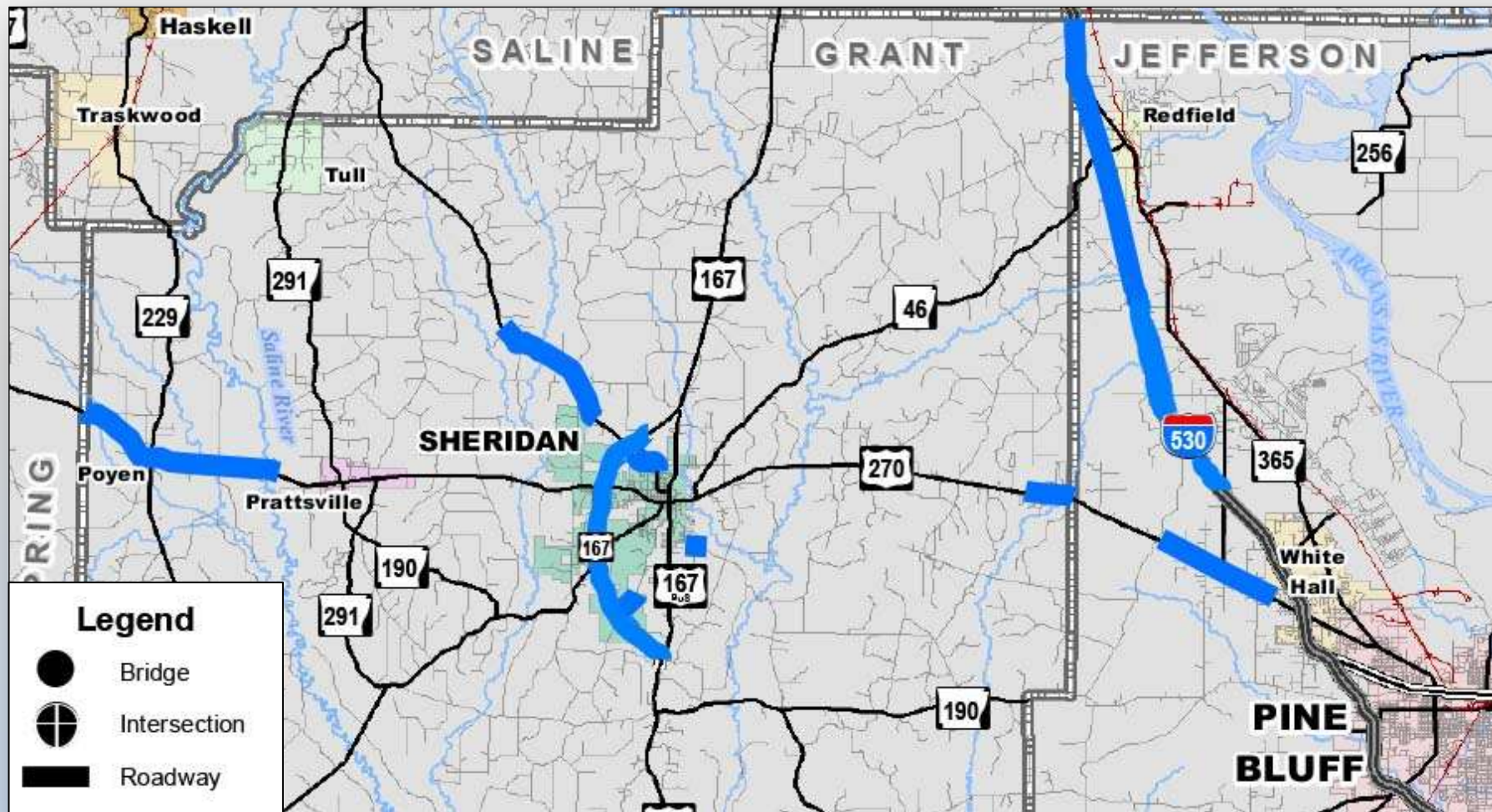


Local Projects



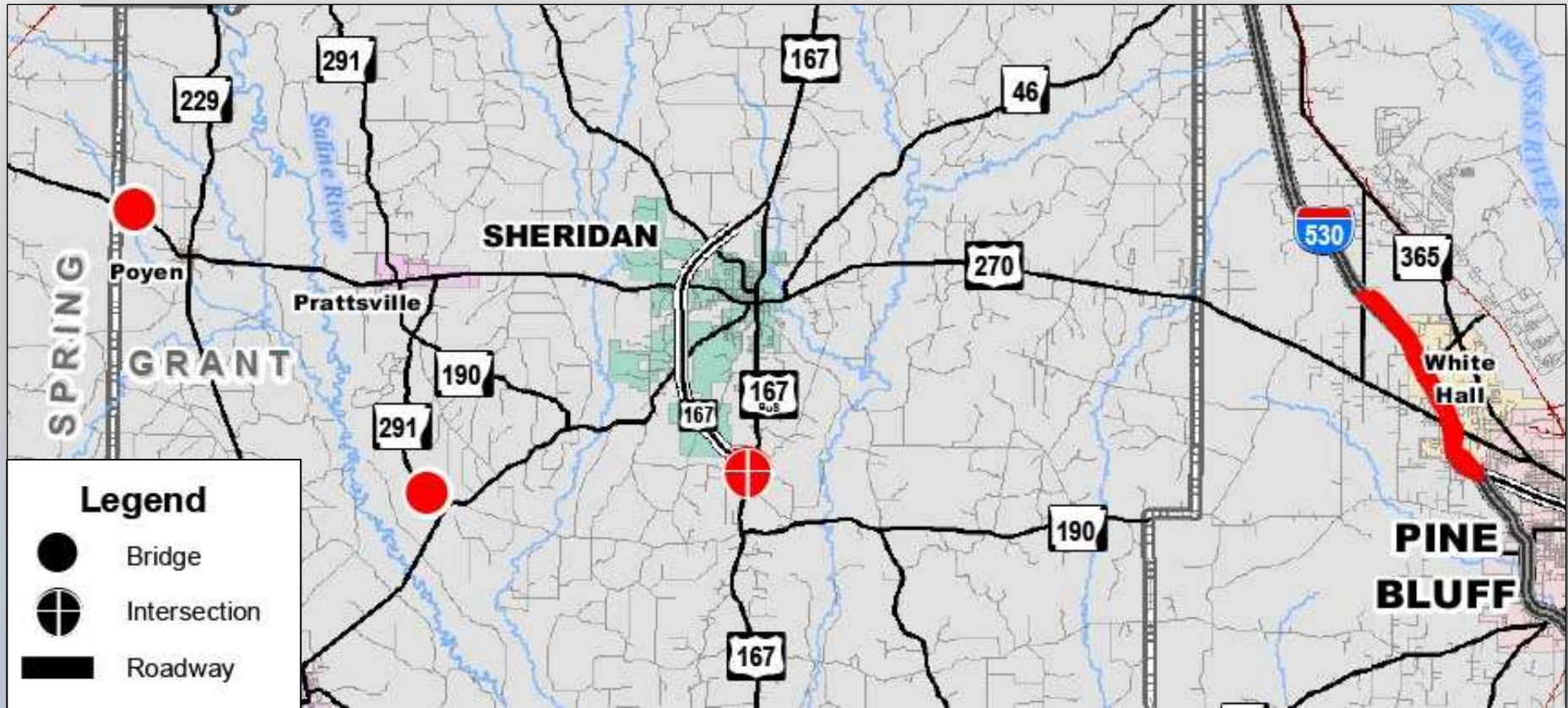


Recently Completed



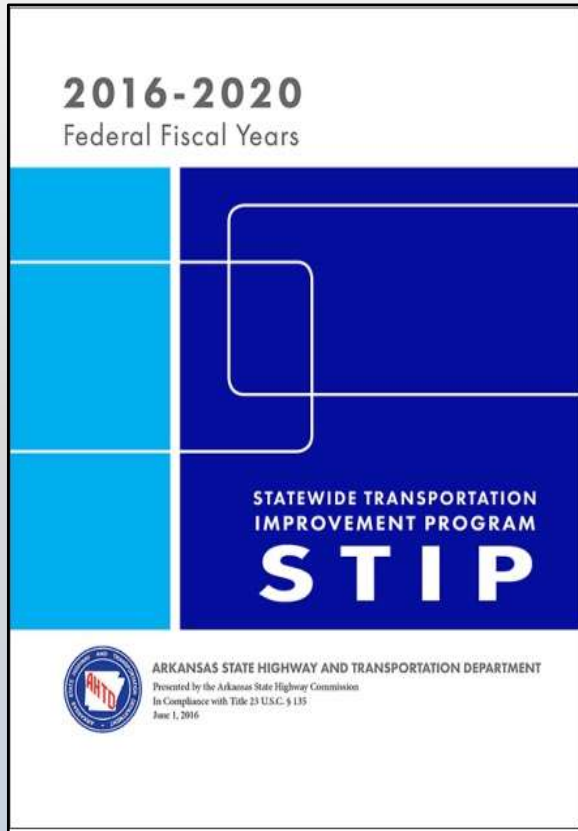


Under Construction





2016-2020 STIP



- **Statewide Transportation Improvement Program**
- Federal Requirement
- Financial Constraint
- Development Supports:
 - ✓ Public Transparency
 - ✓ Consultation with Transportation Planning Partners
 - ✓ Sound Financial Planning
 - ✓ Efficiency of Oversight

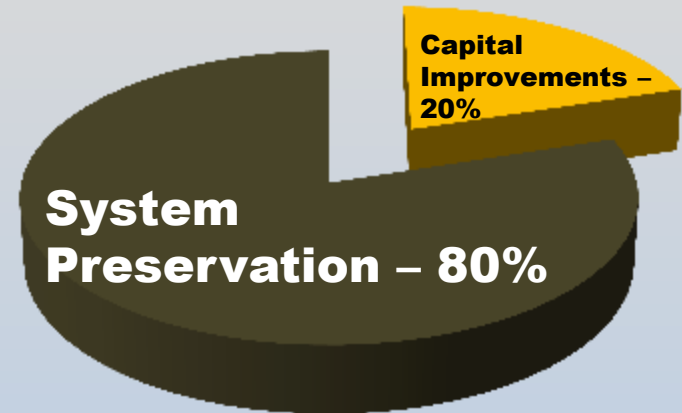


2016-2020 STIP



“When you realize the value of all life, you dwell less on what is past and concentrate more on the preservation of the future.”

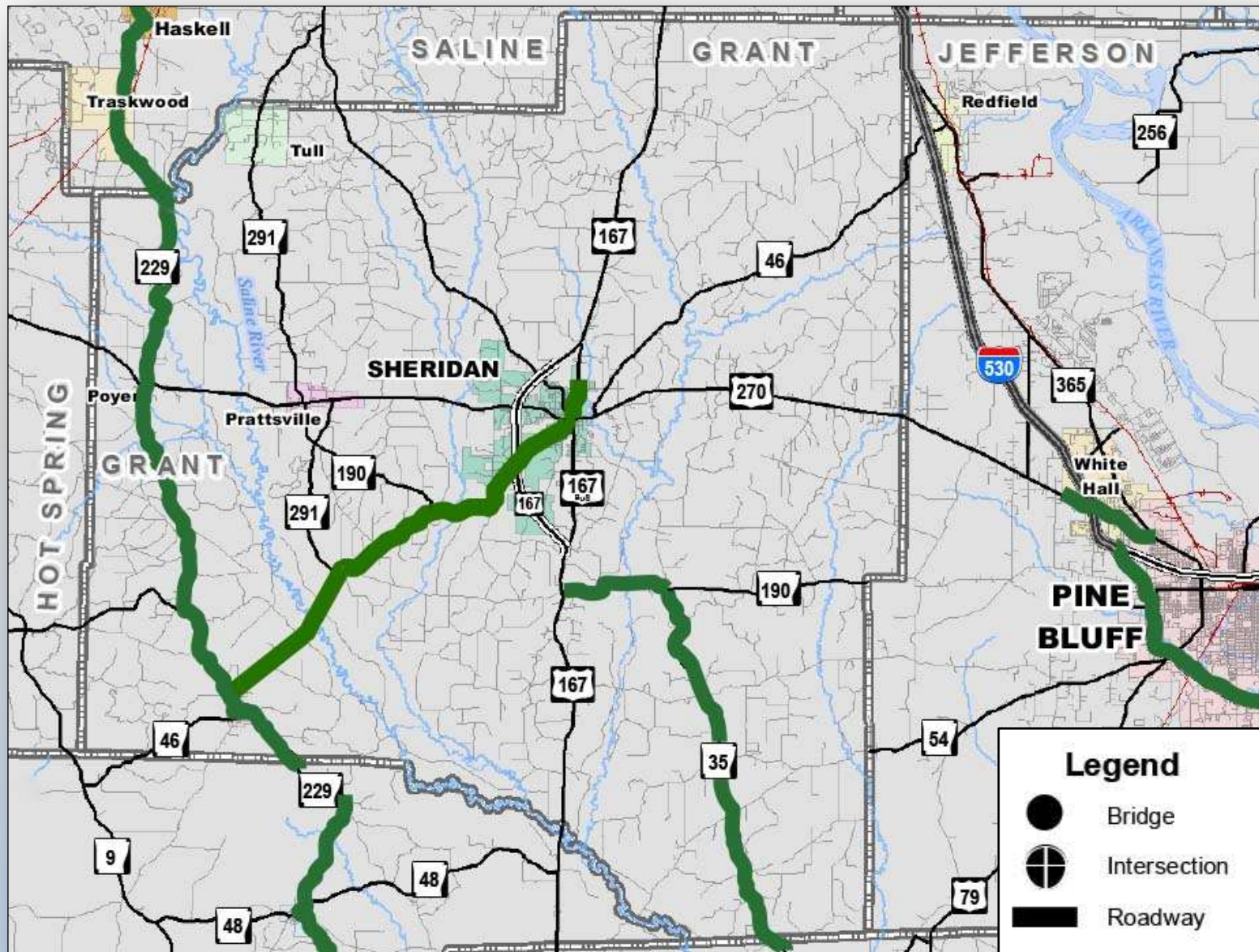
-Dian Fossey



Commission Discretionary Funds

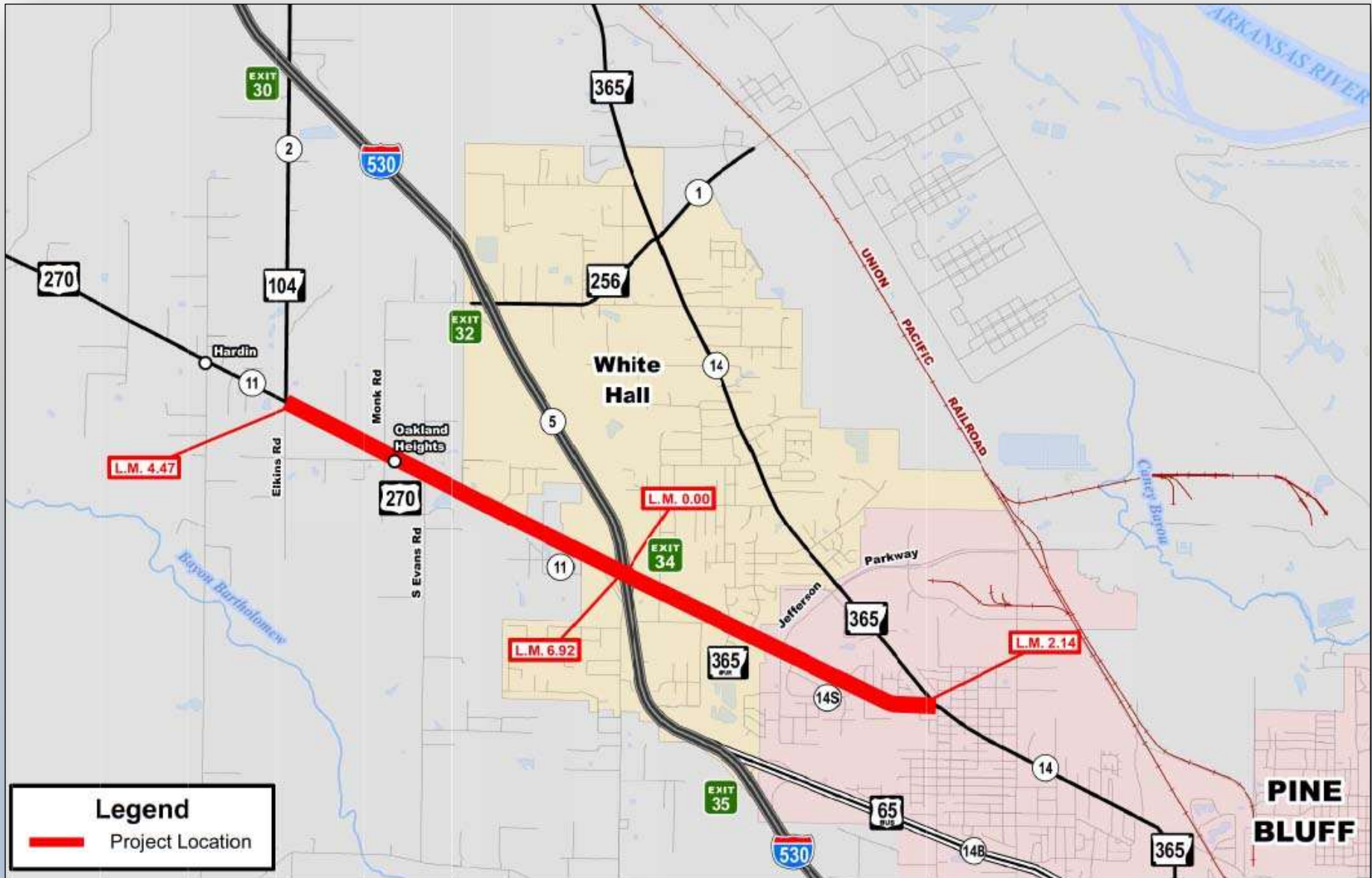


Scheduled for the Future



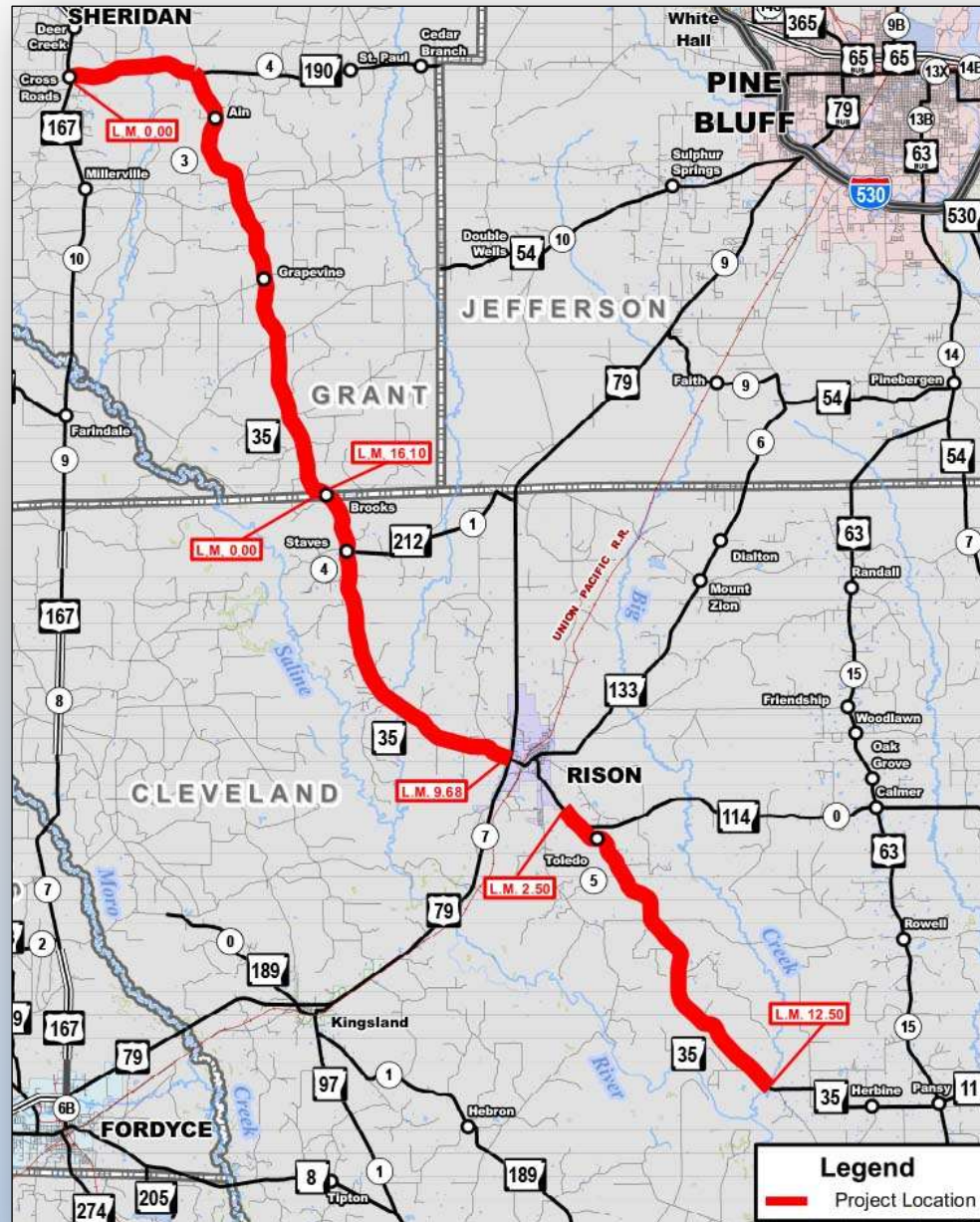


Scheduled





Scheduled





- ArkansasHighways.com
- ConnectingArkansasProgram.com
- Vimeo.com/AHTD
- IDriveArkansas.com
- [Twitter.com @AHTD](https://twitter.com/AHTD)



@AHTD

